



BARRICADE

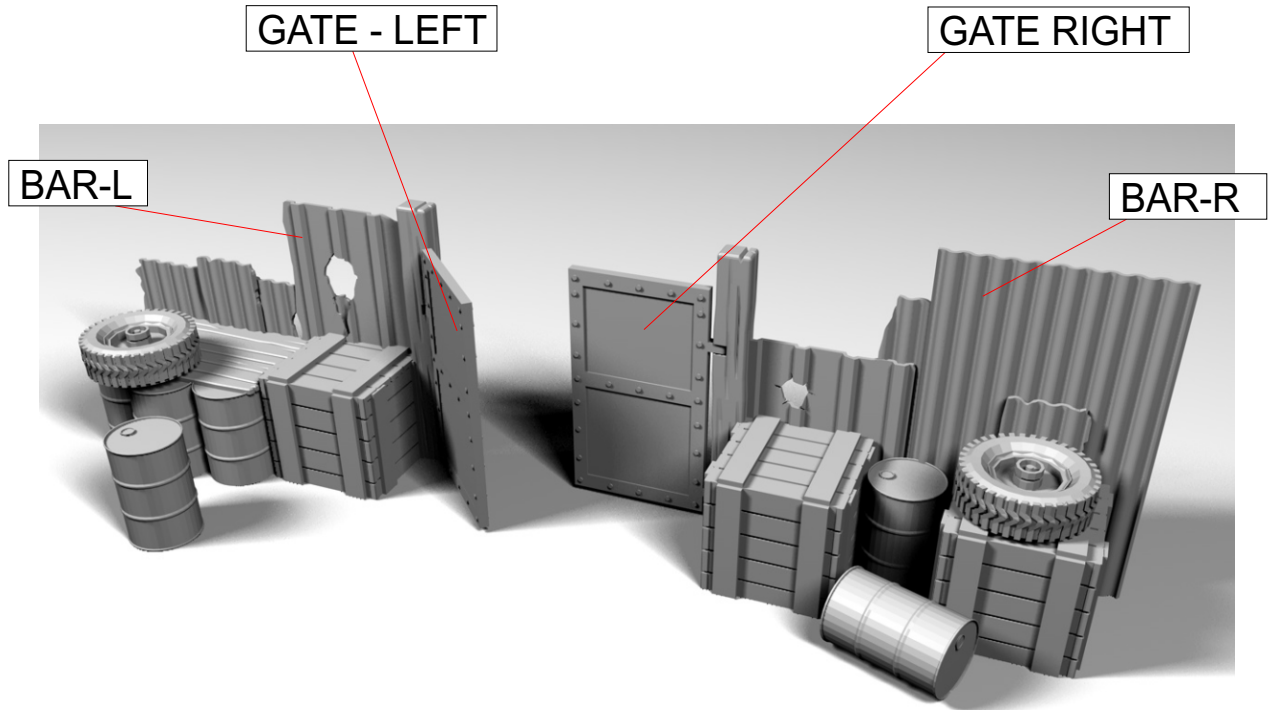
PRINT INSTRUCTIONS

Recommended print settings-

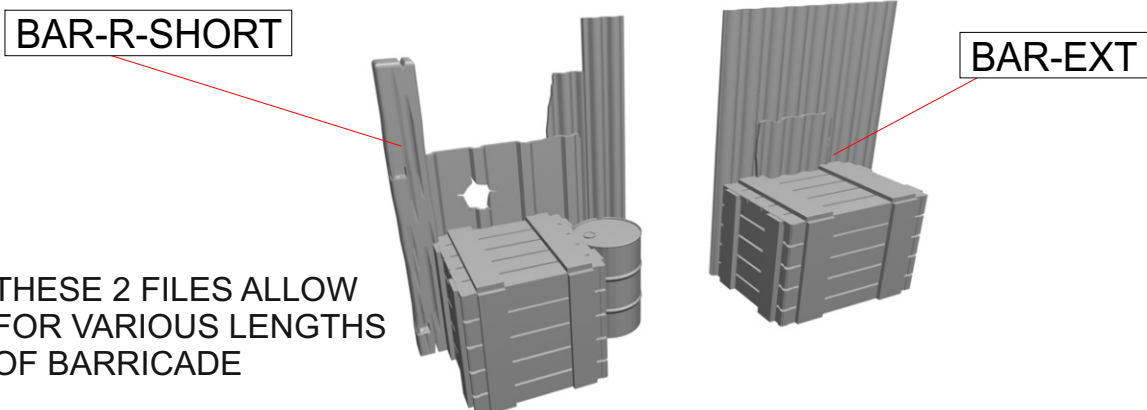
0.1 - 0.15mm Layer

20% infill

1.2mm walls/top/bottom layer



TYRES, BARRELS AND CRATES ARE ALSO SUPPLIED AS SEPARATE ITEMS TO EXTEND THE LENGTH OF THE BARRICADE



THESE 2 FILES ALLOW FOR VARIOUS LENGTHS OF BARRICADE

All files are the intellectual property of Z1 Design Ltd. They are for your personal use only and should not be shared or sold.